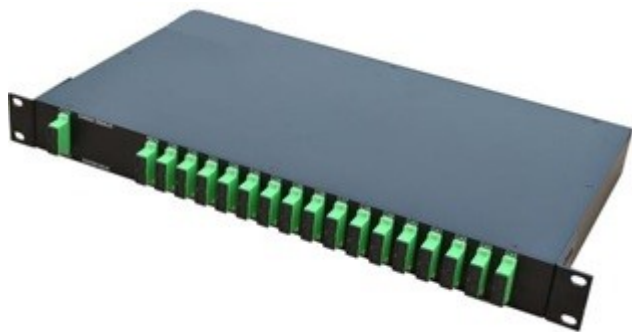




## Sat-Light Platinum Series

### Series 33000

## DWDM Multiplexer & Demultiplexer



### Features & Benefits

- Multiplexes up to 80 RF 5-3000MHz RF channels
- Reduced cost of leasing or laying fiber
- Thin film filter technology provides reliable and cost-effective performance
- Protocol transparent

### Product Description

Foxcom's Dense Wavelength-Division Multiplexer (DWDM) can combine up to 80 fiber outputs from Foxcom's fiber optic transmitters into one single fiber. Each transmission is on a different optical wavelength. DWDM technology uses ITU standard 1.6nm spacing between wavelengths. Each wavelength is transmitted on a separate single mode fiber optic cable and then multiplexed onto a single fiber. Foxcom's Dense Wavelength Division De-multiplexer reverses the process, separating light into 16 separate fiber paths.

With Foxcom's DWDM solution, transmitting multiple L-Band and 70/140 IF Band signals over a single fiber becomes a simple and cost effective process. DWDM overcomes the need for installing new fiber or leasing cables. By using Foxcom's DWDM solution, long distance transmission can be achieved.

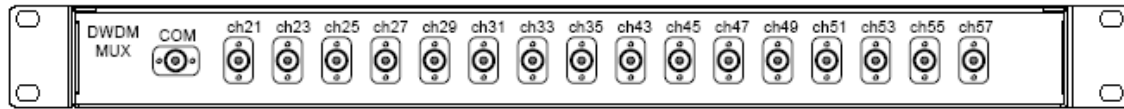
# Sat-Light Platinum Series

## Specifications

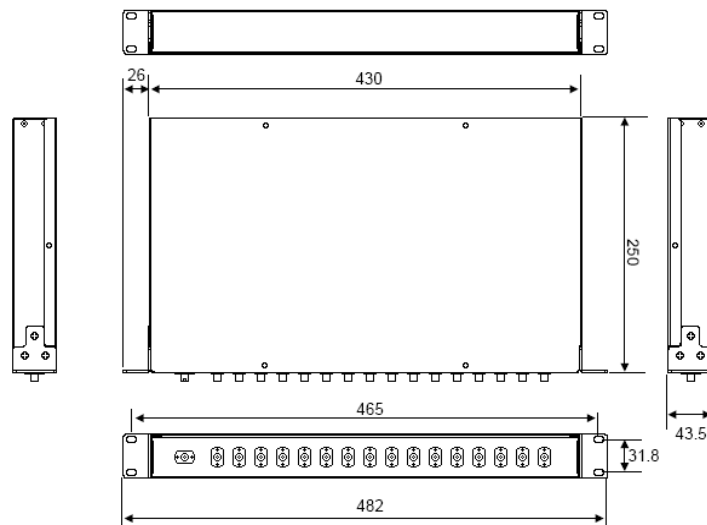
Specification	4 Channel	31 Channel	40 Channel	80 channel
Channel Spacing	1.6nm	0.8nm	0.8nm	0.4nm
Center Wavelength nm ITU CH	21/23/25/27	User Defined/ Contact Factory	User Defined/ Contact Factory	User Defined/ Contact Factory
Passband @0.5dB	ITU ±0.25	ITU ±0.25	ITU ±0.25	ITU ±0.25
Max. Insertion Loss dB	≤ 1.5	≤4	≤ 5	≤ 7
Max. Link Loss dB	≤ 3	≤ 8	≤ 10	≤ 14
Adjacent Channel Isolation dB	≥ 30	≥ 24	≤ 24	≥ 25
Non-adjacent Channel Isolation dB	≥ 40	≥ 30	≥ 30	≥ 30
Optical Input Return Loss dB	≥ 45	≥ 45	≥ 45	≥ 45
Polarization Dependent Loss dB	≤ 0.5	≤ 0.6	≤ 0.6	≤ 0.6
Polarization Mode Dispersion (PMD) ps	≤ 0.5	≤ 0.6	≤ 0.6	≤ 0.6
Thermal Stability Drift pm/°C	≤ 2	NA	NA	NA
Max. Optical Power mW	300mW	300mW	300mW	300mW
Operating Temperature °C	-5 to +65	-5 to +65	-5 to +65	-5 to +65
Storage Temperature	-40 to +85	-40 to +85	-40 to +85	-40 to +85
Dimension	19" 1U	19" 2U	19" 2U	19" 2U

# Sat-Light Platinum Series

## Input / Output Assignment



## Package & Dimensions



## Ordering Information

Description	Model
Multiplexer 4-Channel	33004M-FC
De-multiplexer 4-Channel	33004E-FC
<b>Multiplexer 31-Channel</b>	<b>33031M-FC</b>
<b>De-multiplexer 31-Channel</b>	<b>33031E-FC</b>
Multiplexer 40-Channel	33040M-FC
De-multiplexer 40-Channel	33040E-FC
Multiplexer 80-Channel	33080M-FC
De-multiplexer 80-Channel	33080E-FC

**Other sizes are available upon request**